



---

# ExoQuick-TC<sup>®</sup> ULTRA EV Isolation Kit for Tissue Culture Media

Cat # EQULTRA-20TC-1

## User Manual

---

**Storage: Please see individual components**

Version 3  
7/25/2018

**A limited-use label license covers this product. By use of this product, you accept the terms and conditions outlined in the License and Warranty Statement contained in this user manual.**



---

## Contents

Product Description.....	2
List of Components.....	2
Storage.....	2
Example Data and Applications.....	5
Technical Support.....	6
Licensing and Warranty Statement.....	6



## Product Description

Isolation of extracellular vesicles (EVs) from biofluids such as tissue culture media has been a challenging and sometimes frustrating roadblock to getting to what matters the most – understanding the biology of EVs. The presence of carryover molecules (e.g. proteins) in these biofluids often masks what we are able to detect and becomes a formidable challenge to successful outcomes. Currently available methods to isolate EVs face formidable trade-offs in terms of yield, ease of use, purity, and price – a practical challenge in itself to researchers who care about getting to the “what” as opposed to the “how”.

To address these issues, SBI is proud to introduce ExoQuick-TC<sup>®</sup> ULTRA EV Isolation Kit for Tissue Culture Media (Cat #EQUltra-20TC-1) – an innovative kit drawing upon our expertise in the exosome isolation space. It is the first-in-class kit designed to avoid the trade-offs faced with other EV isolation methods. Now researchers have the power to singularly focus on the challenges of EV biology without worrying about bottlenecks of EV isolation.

The kits come with SBI’s proven ExoQuick-TC<sup>®</sup> EV isolation reagent as well as our convenient, pre-packed bipartate resin columns good for 20 reactions\*. Start from 5ml of tissue culture media and in less than 20 min of total hands-on time, researchers have high-quality EVs for downstream applications such as western blotting, mass spectrometry, NGS sequencing, exosome labeling, and *in vivo/ex vivo* exosome delivery.

**\*Tissue Culture Media: 1 reaction is defined as 5 ml of tissue culture media precipitated using ExoQuick-TC**

## List of Components

Component	Qty/Volume	Storage Temperature
ExoQuick-TC	20 ml	RT
Purification column	20 columns	4°C
Collection tubes	20 tubes	RT
2 ml Eppendorf tubes	20 tubes	RT
Buffer A	5 ml	4°C
Buffer B	30 ml	4°C

## Storage

The Kit is shipped on blue Ice and the components should be stored at recommended temperatures as stated above. Properly stored kits are stable for 12 months from the date received.

## Protocol

### A. ExoQuick-TC Isolation

1. Collect the biofluid and centrifuge at  $3,000 \times g$  for 15 minutes to remove cellular debris.
2. Transfer the supernatant to a new tube.

**!** **OPTIONAL: If additional debris remains detectable, centrifuge the supernatant for additional 10 minutes at  $12,000 \times g$  and transfer the supernatant to a new tube.**

3. Add the appropriate volume of ExoQuick-TC to the clarified biofluid as shown in the table.

Biofluid	Sample Volume	ExoQuick-TC Volume	Incubation Time
Tissue Culture Media	5 ml	1 ml	12hr to O/N at 4°C

4. Mix well by inverting or flicking the tube, and incubate on ice for O/N (or at least 12hrs) at 4°C. The tubes do not need to be rotated during the incubation period.
5. Centrifuge the ExoQuick-TC/biofluid mixture at  $3,000 \times g$  for 10 minutes. Centrifugation may be performed at either room temperature or 4°C with similar results. After centrifugation, the EVs may appear as a beige or white pellet at the bottom of the tube.
6. Carefully aspirate off the supernatant. Spin down any residual ExoQuick solution and remove all traces of fluid by aspiration, taking great care not to disturb the precipitated EVs in the pellet.
7. Resuspend the pellet in 200  $\mu$ l of Buffer B.
8. Measure and record sample protein concentration.

### B. Purification of Isolated EVs

1. Add 200  $\mu$ l of Buffer A to resuspended EVs
2. Take out Purification column, loosen screw cap and snap off the bottom closure. Place the column into a collection tube.

**!** **NOTE: Save the bottom closure for steps 7-9.**

3. Centrifuge at  $1,000 \times g$  for 30 seconds to remove the storage buffer.
4. Discard the flow-through and place the column back into the collection tube.

5. To wash the column, remove the cap and apply 500  $\mu$ l of Buffer B on top of the resin and centrifuge at 1,000 x g for 30 seconds. Discard the flow through.

**!** **NOTE: Save the cap for steps 7-9.**

6. Repeat steps 4 – 5 one more time to wash the column.

7. Plug the bottom of the column with the bottom closure. Apply 100  $\mu$ l of Buffer B on top of the resin to prep it for sample loading.

8. Add the entire content from step 1 (or up to volume equivalent of 4 mg of total protein) to the resin. Place the screw cap on the top of the column.

9. Mix at room temperature (RT) on a rotating shaker for 5 minutes.

### **C. Sample Elution**

**!** **CAUTION: Sample will start to elute as soon as the bottom closure is removed. Please make sure 2 ml Eppendorf tubes are ready to receive eluate to minimize sample loss.**

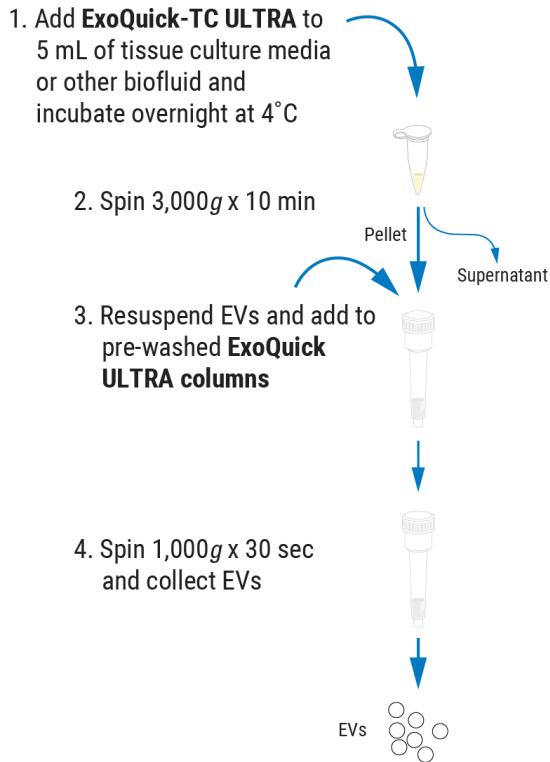
1. Loosen the screw cap and remove the bottom closure, and immediately transfer to 2 ml Eppendorf tube.

2. Centrifuge at 1,000 x g for 30 seconds to obtain purified EVs.

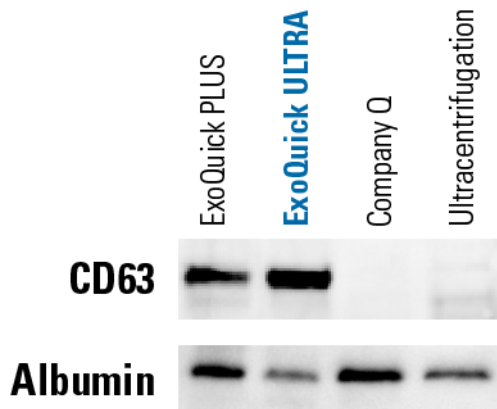
3. Discard the column.

## Example Data and Applications

### The ExoQuick-TC ULTRA Workflow



**Figure 1. Workflow for ExoQuick-TC® ULTRA EV Isolation Kit.** Highly purified EVs from 5 ml of tissue culture media can be obtained in less than 20 minutes of hands-on time.



**Figure 2. ExoQuick-TC ULTRA delivers higher yields and purity than competing EV isolation methods.** Western blotting shows ExoQuick-TC ULTRA prep contains the highest levels of exosome-specific marker CD63, and lowest levels of bovine albumin (present in serum and additives to media). Each lane was loaded with 4 µg of total protein as measured using Qubit fluorimetric protein assay.



## Technical Support

For more information about SBI products and to download manuals in PDF format, please visit our web site: <http://www.systembio.com>

For additional information or technical assistance, please call or email us at:

System Biosciences (SBI)  
2438 Embarcadero Way  
Palo Alto, CA 94303

**Phone:** (650) 968-2200  
**Toll-Free:** (888) 266-5066  
**Fax** (650) 968-2277

**E-mail:**

General Information: [info@systembio.com](mailto:info@systembio.com)  
Technical Support: [tech@systembio.com](mailto:tech@systembio.com)  
Ordering Information: [orders@systembio.com](mailto:orders@systembio.com)

## Licensing and Warranty Statement

### Limited Use License

Use of the ExoQuick-TC<sup>®</sup> ULTRA EV Isolation Kit (*i.e.*, the “Product”) is subject to the following terms and conditions. If the terms and conditions are not acceptable, return all components of the Product to System Biosciences (SBI) within 7 calendar days. Purchase and use of any part of the Product constitutes acceptance of the above terms.

The purchaser of the Product is granted a limited license to use the Product under the following terms and conditions:

- The Product shall be used by the purchaser for internal research purposes only. The Product is expressly not designed, intended, or warranted for use in humans or for therapeutic or diagnostic use.
- The Product may not be resold, modified for resale, or used to manufacture commercial products without prior written consent of SBI.
- This Product should be used in accordance with the NIH guidelines developed for recombinant DNA and genetic research.

SBI has pending patent applications related to the Product. For information concerning licenses for commercial use, contact SBI.

Purchase of the product does not grant any rights or license for use other than those explicitly listed in this Licensing and Warranty Statement. Use of the Product for any use other than described expressly herein may be covered by patents or subject to rights other than those mentioned. SBI disclaims any and all responsibility for injury or damage which may be caused by the failure of the buyer or any other person to use the Product in accordance with the terms and conditions outlined herein.

### Limited Warranty

SBI warrants that the Product meets the specifications described in this manual. If it is proven to the satisfaction of SBI that the Product fails to meet these specifications, SBI will replace the Product or provide the purchaser with a refund. This

limited warranty shall not extend to anyone other than the original purchaser of the Product. Notice of nonconforming products must be made to SBI within 30 days of receipt of the Product.

SBI's liability is expressly limited to replacement of Product or a refund limited to the actual purchase price. SBI's liability does not extend to any damages arising from use or improper use of the Product, or losses associated with the use of additional materials or reagents. This limited warranty is the sole and exclusive warranty. SBI does not provide any other warranties of any kind, expressed or implied, including the merchantability or fitness of the Product for a particular purpose.

SBI is committed to providing our customers with high-quality products. If you should have any questions or concerns about any SBI products, please contact us at (888) 266-5066.

© 2018 System Biosciences (SBI), All Rights Reserved

***This page intentionally left blank.***



---

System Biosciences (SBI)  
2438 Embarcadero Way  
Palo Alto, CA 94303

**Phone:** (650) 968-2200  
**Toll-Free:** (888) 266-5066  
**Fax:** (650) 968-2277

**E-mail:**

General Information: [info@systembio.com](mailto:info@systembio.com)  
Technical Support: [tech@systembio.com](mailto:tech@systembio.com)  
Ordering Information: [orders@systembio.com](mailto:orders@systembio.com)