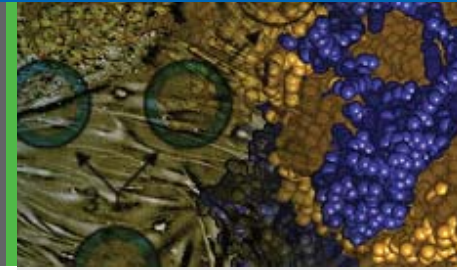


iPS Cell Lines

iPS Cells Certified for Pluripotency Markers



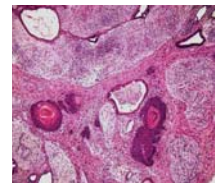
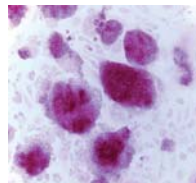
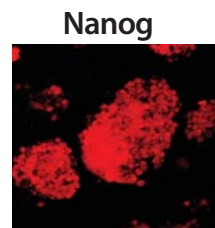
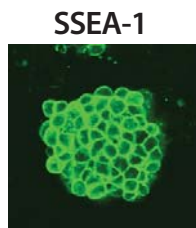
Certified iPS Cell Lines Positive for Pluripotent Markers

SBI offers matched sets of Human and Mouse source (fibroblasts) and Induced Pluripotent (iPS) Cell Lines. These cell lines are verified for stem cell pluripotency markers and are pre-made and validated - ready for your iPSC research. The iPS cells can be used to study differentiation - allowing research into the pathways and factors involved in tissue type specification.

The matched set cell lines enable you to directly compare the differentiated and the induced pluripotent state.

Discover fundamental stem cell properties:

- Study epigenetic pattern formation
- Measure gene expression changes
- Profile microRNA signaling
- Identify factors that direct differentiation



iPS Cell Line Validation using Stem cell markers for SSEA-4/1 and Nanog using immunocytochemistry. Alkaline Phosphatase activity confirmation using an AP Detection kit. Validation of teratoma formation SCID mice subcutaneous injection and visualization using hematoxylin and eosin staining.

Highlights

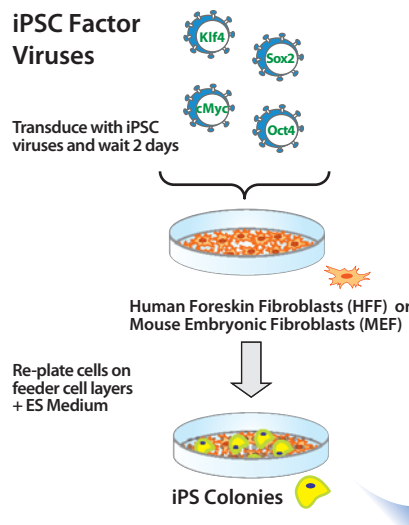
- Reprogrammed with Oct4, Sox2, Klf4 and c-Myc
- Certified pluripotent through stem cell marker immunostaining
- Study the pluripotency process with pre-made iPS Cells
- Use SBI's iPS Cells to develop differentiation protocols
- Custom iPS Cell Line Service - create disease-specific stem cells
- Receive matched source and iPS Cells

Jump start your iPSC Research with Verified iPS Cell Lines from SBI!

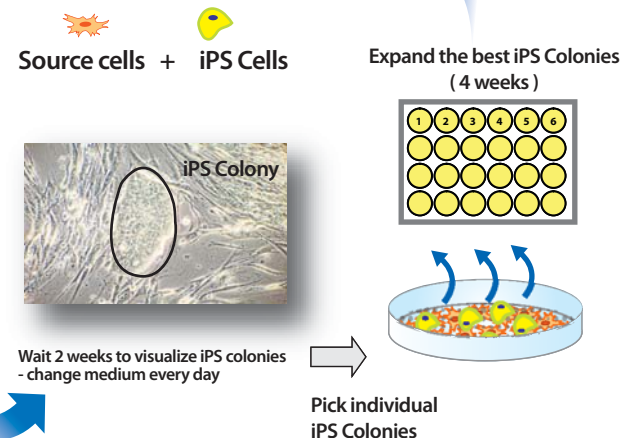
How the iPS Cell Lines are made

Human foreskin fibroblasts (HFFs) or Mouse embryonic fibroblasts (MEFs) are transduced with high-titer iPSC "clean" virus to induce pluripotency. The result is high quality iPS cells with no fluorescent markers or drug selection required. The entire process takes up to 6 weeks. The iPS Cell lines are certified for pluripotency markers SSEA-4/1, Nanog and for AP activity.

iPSC Factor Viruses



Here is what you receive : Matched-set of iPS Cell Lines in two separate vials



iPS Cell Lines

Perform Directed Differentiation Experiments

SBI's Human and Mouse Induced Pluripotent (iPS) Cell Lines are capable of producing multiple tissue lineages.

This enables you to:

- Develop directed differentiation protocols
- Make new transgenic lines and animal models
- Create new reporter animal models

Confirm lineage specification using SBI's Differentiation Lenti-reporters available across five separate lineages:

- Neural (Astrocytes, Microglia, Neurons, Optic nerves)
- Hematopoietic (B-cells, T-cells, Macrophages)
- Myogenic (Cardiac, Skeletal, Smooth Muscle)
- Structural (Bone, Skin, Fat)
- Signaling (Beta cells, Islets)

Create disease-specific iPS Cell Lines with SBI's custom services!

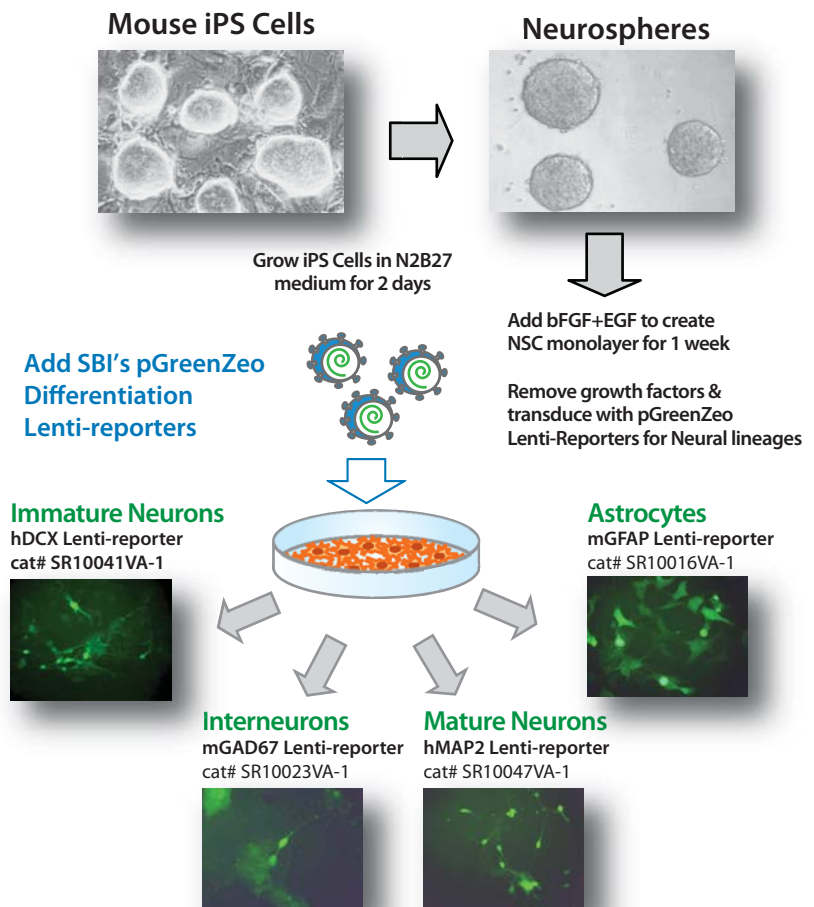
Custom iPS Cell Line Service

Gain the Expertise of SBI's Stem Cell Scientists

SBI can save you the time and trouble of reprogramming your cells into the pluripotent state. Let SBI's expert stem cell scientists accelerate your research discoveries and make the custom iPS Cell lines you need.

Custom iPS Cell Lines:

- iPS cells from your model system
- Human or Mouse iPSCs
- Reprogrammed with Oct4, Sox2, Klf4 and c-Myc
- Process takes about 2-3 months
- Certified to be pluripotent through marker staining



SBI's iPSCs Differentiate into Multiple Neural Lineages

SBI's Mouse iPS Cells were allowed to form neural stem cell monolayers (NSCs) using media containing bFGF and EGF. The NSCs were then transduced independently with SBI's pGreenZeo Lenti-reporters for Immature Neurons (doublecortin), Interneurons (glutamic acid decarboxylase 1), Mature Neurons (microtubule-associated protein 2) or Astrocytes (Glial fibrillary acidic protein). NSCs that differentiated into the different neural lineages were monitored using the GFP reporter and visualized for distinct morphological properties. (Figure above)

We Also Offer Custom Services

System Biosciences offers a wide-range of custom services to support your research, allowing you to spend less time making tools, and more time making discoveries. To learn more, visit our website at www.systembio.com/service or call us at 888-266-5066.